



APPLICATIONS

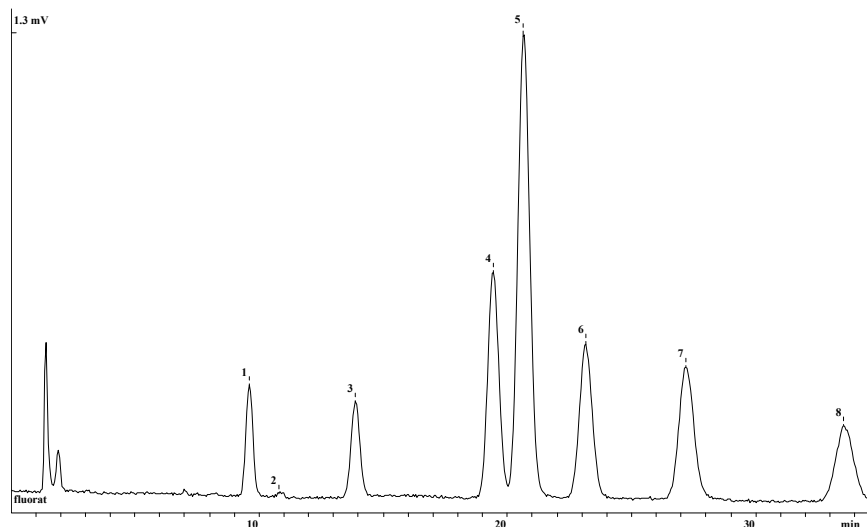
Separation of PAH in various samples:

- **Atmospheric air**
- **Snow**
- **Wastewater**
- **Soil**

SEPARATION OF STANDARD EPA 610 PAH MIXTURE

The chromatogram of EPA 610 PAH mixture

1. fluoranthene
2. pyrene
3. chrysene
4. benzo(*b*)fluoranthene
5. benzo(*k*)fluoranthene
6. benzo(*a*)pyrene
7. dibenzo(*a,h*)anthracene
8. benzo(*g,h,i*)perylene



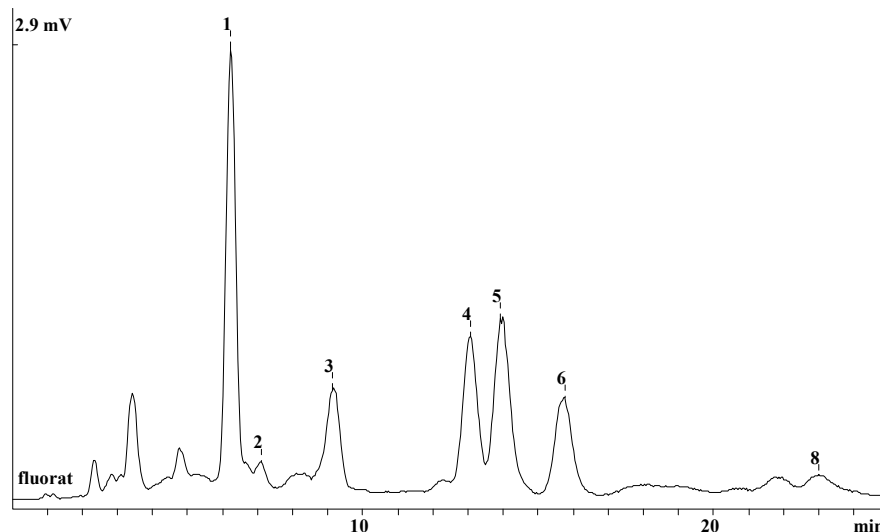
Determination conditions

Column: Kromasil C18 2.0x150 mm
 Eluent: acetonitrile/water 4:1
 Detection: Fluorat 02-2M, fluorimetric excitation
 filter max - 293 nm, emission filter max - 450 nm.

DETECTION OF PAH IN ATMOSPHERIC AIR

PAH in atmospheric air sample of aluminum plant origin

1. fluoranthene
2. pyrene
3. chrysene
4. benzo(*b*)fluoranthene
5. benzo(*k*)fluoranthene
6. benzo(*a*)pyrene
7. dibenzo(*a,h*)anthracene
8. benzo(*g,h,i*)perylene



Determination conditions

Column: Kromasil C18 2.0x100 mm

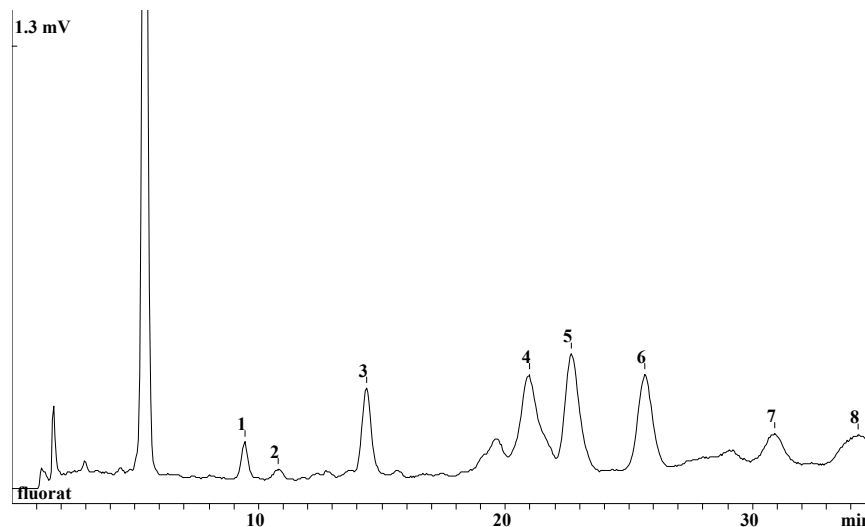
Eluent: acetonitrile/water 4:1

Detection: Fluorat 02-2M, fluorimetric excitation
filter max – 293 nm, emission filter max – 450 nm.

DETECTION OF PAH IN SNOW

PAH in snow sample

1. fluoranthene
2. pyrene
3. chrysene
4. benzo(*b*)fluoranthene
5. benzo(*k*)fluoranthene
6. benzo(*a*)pyrene
7. dibenzo(*a,h*)anthracene
8. benzo(*g,h,i*)perylene



Determination conditions

Column: Kromasil C18 2.0x150 mm

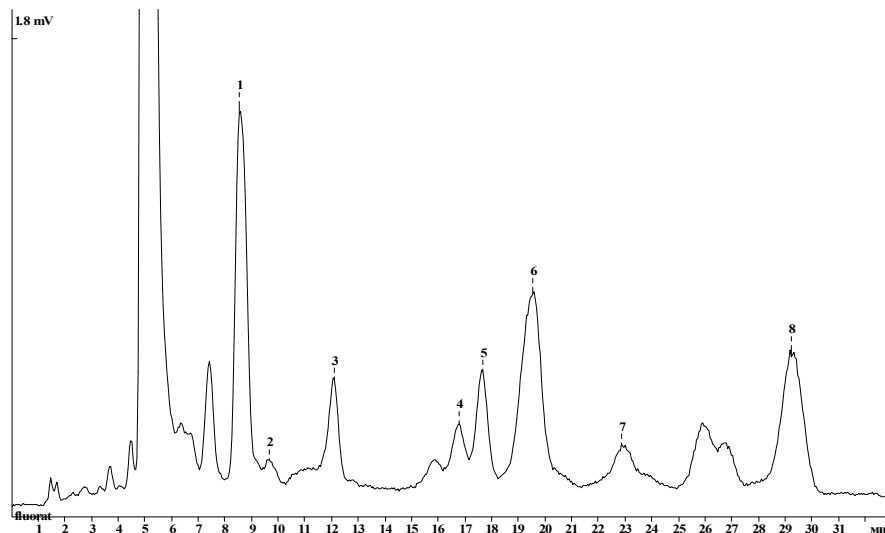
Eluent: acetonitrile/water 4:1

Detection: Fluorat 02-2M, fluorimetric excitation
filter max – 293 nm, emission filter max – 450 nm.

DETECTION OF PAH IN WATEWATER

PAH in waste water sample

1. fluoranthene
2. pyrene
3. chrysene
4. benzo(*b*)fluoranthene
5. benzo(*k*)fluoranthene
6. benzo(*a*)pyrene
7. dibenzo(*a,h*)anthracene
8. benzo(*g,h,i*)perylene



Determination conditions

Column: Kromasil C18 2.0x150 mm

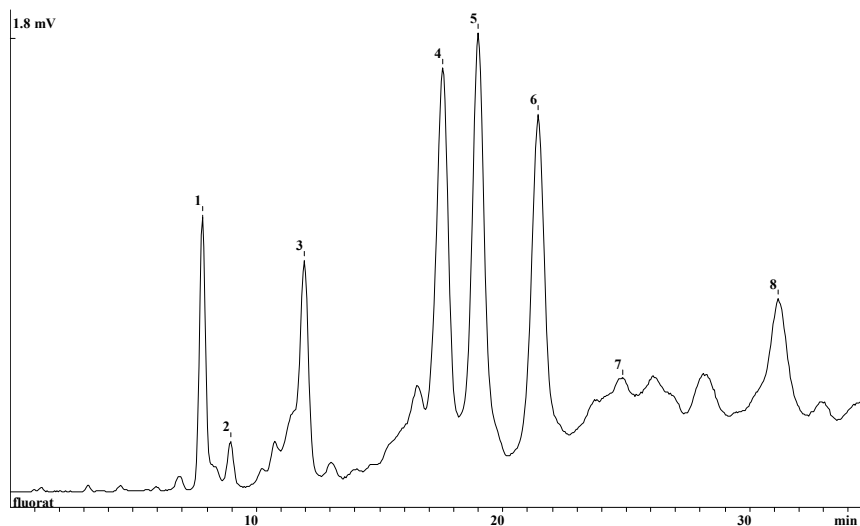
Eluent: acetonitrile/water 4:1

Detection: Fluorat 02-2M, fluorimetric excitation
filter max – 293 nm, emission filter max – 450 nm.

DETECTION OF PAH IN SOIL

The soil sample taken nearby rail tracks

1. fluoranthene
2. pyrene
3. chrysene
4. benzo(*b*)fluoranthene
5. benzo(*k*)fluoranthene
6. benzo(*a*)pyrene
7. dibenzo(*a,h*)anthracene
8. benzo(*g,h,i*)perylene



Determination conditions

Column: Kromasil C18 2.0x150 mm

Eluent: acetonitrile/water 4:1

Detection: Fluorat 02-2M, fluorimetric excitation
filter max – 293 nm, emission filter max – 450 nm.